



G2 SERIES INTRINSICALLY SAFE

A full line of **FLOMEC® G2 Series Turbine Meters** are available in a variety of housing materials. Rugged and dependable, the G2 Series offers:

- Stainless Steel for most water and chemical products
- Aluminum for fuels and petroleum-based products
- PVDF for aggressive chemicals

FEATURES / BENEFITS

- Meter is designed for thin fluids < 100 cP
- Modular design allows for use with Output Modules, Sensors and Remote Display Kits
- 2 Totals (Batch Total = Resettable, Total = Non-Resettable); Rate of Flow, Factory calibrated in gallons or litres. Field calibratable. Includes non-volatile totals.
- High accuracy meter
- Internal parts are simple to replace for easy maintenance
- AAA Alkaline battery life: 2 years

PRODUCT CONFIGURATION

1 PRODUCT IDENTIFIER:

G2 = Industrial Grade Flowmeters

2 TURBINE MATERIAL:

S = Stainless Steel
A = Aluminum
P = PVDF (1/2 in. y 1 in. only)
X = Electronics only (For metal meters)
Z = Electronics only (For plastic meters)

3 TURBINE SIZE:

05 = 1/2 in. **15** = 1-1/2 in.
07 = 3/4 in. **20** = 2 in.
10 = 1 in.

4 FITTING TYPE:

N = NPT (Female)
I = ISO (Female) BSPT (ISO 7 Designation is RC)
F = 150# ANSI Flange (Available on S10, S15 & S20 only)
T = Tri-Clamp Fitting (Available on S05, S07, S10, S15 & S20 only)
X = No Turbine Body

5 ELECTRONIC CHOICE:

Computer Display, Meter Mounted
Q9 = Q9 2-Button Computer
Q1 = Q9 2-Button Computer, Vertical Mount (90° Adapter)
Retrofit Computer Kit (Display Only)
R9 = Q9 2-Button Computer Retrofit Kit (Replaces 09 Display)
No Electronics - Turbine Only
XX = No Electronics - Turbine Only

6 CALIBRATION OF COMPUTER / DISPLAY:

GM = Gallons Per Minute (Gallons Default)
LM = Liters Per Minute (Litres Default)
GD = Gallons Per Minute (Gallons Default) with NIST Certificate
LD = Liters Per Minute (Litres Default) with NIST Certificate
XX = No Calibration

7 PACKAGING:

A = 05 Thru 10 Turbines, Turbine Only or w/Q9 Electronics
05 Thru 20 Electronics Only (Q9 Replacement Kit or R9 Retrofit Kit)
B = 15 & 20 Turbines, Turbine Only or w/Q9 Electronics
05 Thru 10 Turbines w/Q1 Electronics
C = 15 Thru 20 Turbine w/Q1 Electronics
D = 10 Turbines with ANSI Flange Turbine Only or w/Q9, Q1 Electronics
E = 15 & 20 Turbines with ANSI Flange Turbine Only or w/Q9, Q1 Electronics

APPLICATIONS

- Batching
- Blending
- Water
- Industrial fluids
- Plating solutions
- Ammonium
- Food and beverage processing
- Fuel Products
- Monitoring clean fluids
- Plant process water
- Chemical feed lines
- Harsh chemicals (sulfuric acid and bleach)

1 2 3 4 5 6 7

---->>>> G2 S 15 N Q9 GM B



SPECIFICATIONS

Fitting Type:	NPT or ISO (Female) BSPT (ISO 7 designation is RC)				
	150# ANSI (S10, S15 y S20 only)				
	Tri-Clamp (Stainless Steel only) - Fitting size is one size bigger than meter size				
Meter Sizes Available:	1/2"	3/4"	1"	1-1/2"	2"
Corresponding Tri-Clamp Fitting:	3/4"	1"	1-1/2"	2"	2-1/2"
Housing Material:	316 Acero Inoxidable, Aluminio, PVDF				
Flow Range:	1/2" (05)	1 - 10 GPM		(3.8 - 38 L/min)	
	1/2" (05) PVDF Only	1.2 - 12 GPM		(4.5 - 45 L/min)	
	3/4" (07)	2 - 20 GPM		(7.6 - 76 L/min)	
	1" (10)	5 - 50 GPM		(19 - 190 L/min)	
	1-1/2" (15)	10 - 100 GPM		(38 - 380 L/min)	
	2" (20)	20 - 200 GPM		(76 - 760 L/min)	
Accuracy (% of Reading):	Turbine Only		Turbine w/Computer		
	1/2" (05)	± 2.0%		± 1.5%	
	3/4" (07)	± 1.5%		± 1.0%	
	1" (10)	± 1.5%		± 1.0%	
	1-1/2" (15)	± 1.0%		± 0.75%	
	2" (20)	± 1.0%		± 0.75%	
Repeatability:	± 0.1% (PVDF is ± 0.3%)				

DIMENSIONS NOTE: Q9 Display adds 0.72 in. (18 mm) to height

Stainless Steel Models

	S05, 1/2 in.	S07, 3/4 in.	S10, 1 in.	S15, 1 1/2 in.	S20, 2 in.
A = Height	1.4 in. (35.6 mm)	1.6 in. (40.6 mm)	1.9 in. (48.3 mm)	2.6 in. (66.0 mm)	3.1 in. (78.7 mm)
B = Width	2.0 in. (50.8 mm)	2.0 in. (50.8 mm)	2.0 in. (50.8 mm)	2.7 in. (68.6 mm)	3.4 in. (86.4 mm)
C = Length	4.2 in. (106.7 mm)	4.3 in. (109.2 mm)	4.5 in. (114.3 mm)	5.3 in. (134.6 mm)	6.3 in. (160.0 mm)

Aluminum Models

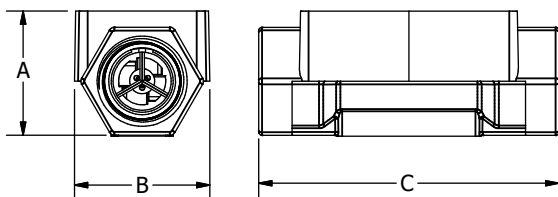
	A05, 1/2 in.	A07, 3/4 in.	A10, 1 in.	A15, 1 1/2 in.	A20, 2 in.
A = Height	1.8 in. (45.7 mm)	2.0 in. (50.8 mm)	2.2 in. (55.9 mm)	2.8 in. (71.1 mm)	3.2 in. (81.3 mm)
B = Width	2.0 in. (50.8 mm)	2.0 in. (50.8 mm)	2.0 in. (50.8 mm)	2.7 in. (68.6 mm)	3.3 in. (83.8 mm)
C = Length	4.2 in. (106.7 mm)	4.3 in. (109.2 mm)	4.5 in. (114.3 mm)	5.3 in. (134.6 mm)	6.3 in. (160.0 mm)

PVDF Models

	P05, 1/2 in.	P10, 1 in.
A = Height	3.2 in. (81.3 mm)	3.3 in. (83.8 mm)
B = Width	2.1 in. (53.3 mm)	2.8 in. (71.1 mm)
C = Length	7.3 in. (185.4 mm)	8.1 in. (205.7 mm)

NOTE: For representation purpose only. Actual product models vary in shape, design, etc

ANSI Flange and Sanitary Flange dimensions not shown. For those dimensions, please refer to product manuals or our website FLOMEcmeters.com.



Pressure Rating:	
Stainless Steel 316 SS	1,500 psi (102 bar)
Aluminum	300 psi (21 bar)
ANSI Flange 316 SS	Flange Rule
Sanitary Flange 316 SS	Limited by fitting, clamp size, & temperature
PVDF	100 psi (6.9 bar)
Operating Temperature Range:	-40° F to 250° F (-40° C to 121° C)
	(PVDF) -20° F to 180° F (-28° C to 82° C)
with Intrinsically Safe Display:	0° F to +129° F (-18° C to +54° C)
Typical K-Factor:	1/2" (05) 2,500 PPG (660 Pulses/L)
	3/4" (07) 1,100 PPG (291 Pulses/L)
	1" (10) 565 PPG (149 Pulses/L)
	1-1/2" (15) 215 PPG (57 Pulses/L)
	2" (20) 100 PPG (26 Pulses/L)
Wetted Materials:	Housing: 316 Stainless Steel or Aluminum
	Bearings: 96% Alumina Oxide Ceramic
	Shaft: Tungsten Carbide
	Rotor: PVDF
	Rings: 316 Stainless Steel
Wetted Materials PVDF:	Housing: PVDF (15% Carbon Fiber Filled)
	Bearings & Shaft: 98% Alumina Ceramic
	Rotor: PVDF
	Rings: Fluorocarbon (Optional PTFE)
Frequency Range:	1/2" (05) 42-420 Hz @ 1-10 GPM (3.8-38 L/min) / 45-450 Hz @ 1.2-12 GPM (4.5-45 L/min) (PVDF)
	3/4" (07) 37-370 Hz @ 2-20 GPM (7.6-76 L/min)
	1" (10) 47-470 Hz @ 5-50 GPM (19-190 L/min) / 45-475 Hz @ 5-50 GPM (19-190 L/min) (PVDF)
	1-1/2" (15) 36-360 Hz @ 10-100 GPM (38-380 L/min)
	2" (20) 33-330 Hz @ 20-200 GPM (76-760 L/min)
Calibration Report:	Comes standard with G2 Series meters.
	N.I.S.T. - Certification available.

ACCESSORIES

Part No.	Description	Part No.	Description
120077-01	FM Approved Sensor	113275-10	FM Approved Remote Kit
120077-02	ATEX Approved Sensor	125206-2	1/2 in. Teflon O-Ring for PVDF Meter (2)
125260-02	90° Display Adaptor Kit	125206-1	1 in. Teflon O-Ring for PVDF Meter (2)

APPROVALS





G2 SERIES SAFE AREA ONLY

A full line of **FLOMEC® G2 Series Turbine Meters** are available in a variety of housing materials. Rugged and dependable, the G2 Series offers:

- Stainless Steel for most non-volatile products
- Aluminum for non-volatile petroleum-based products
- PVDF for aggressive chemicals

FEATURES / BENEFITS

- Meter is designed for thin fluids < 100 cP
- Modular design allows for use with Output Modules, Sensors and Remote Display Kits
- 2 Totals (Batch Total = Resettable, Total = Non-Resettable); Rate of Flow, Factory calibrated in gallons or litres. Field calibratable. Includes non-volatile totals.
- High accuracy meter
- Internal parts are simple to replace for easy maintenance
- AAA Alkaline battery life: 2 years
- High temperature local display option for Stainless Steel meters only (185° F/85° C)

PRODUCT CONFIGURATION

1 PRODUCT IDENTIFIER:

G2 = Industrial Grade Flowmeters

2 TURBINE MATERIAL:

S = Stainless Steel
A = Aluminum
P = PVDF (1/2 in. & 1 in. only)
H = High Pressure Stainless Steel
X = Electronics only (For metal meters)
Z = Electronics only (For plastic meters)

3 TURBINE SIZE:

05 = 1/2 in. **15** = 1-1/2 in.
07 = 3/4 in. **20** = 2 in.
10 = 1 in.

4 FITTING TYPE:

N = NPT (Female)
I = ISO (Female) BSPT (ISO 7 Designation is RC)
F = 150# ANSI Flange (Available on S10, S15 & S20 only)
T = Tri-Clamp Fitting (Available on S05, S07, S10, S15 & S20 only)
X = No Turbine Body

APPLICATIONS

- Batching
- Blending
- Water
- Industrial fluids
- Plating solutions
- Ammonium
- Food and beverage processing
- Monitoring clean fluids
- Plant process water
- Chemical feed lines
- Harsh chemicals (sulfuric acid and bleach)

5 ELECTRONIC CHOICE:

Computer Display, Meter Mounted

Q9 = Q9 2-Button Computer

Q1 = Q9 2-Button Computer, Vertical Mount (90° Adapter)

H9 = Q9 2-Button Computer with High Temp Riser (185° F/85° C)
 [Available on stainless steel bodies only]

Computer Display & Module, Meter Mounted

P9 = Q9 2-Button Computer w/Pulse Out Module, includes External Power and 10 ft. of Cable

42 = Q9 2-Button Computer w/4-20mA Module and 10 ft. of Cable
Module, Meter Mounted (No Display)

PO = Pulse Out (Unscaled) Conditioned Signal Module w/Cable
QSI Options, Meter Mounted (No Display)

81 = QSI Version 1 (Scaled Pulse, RS485 [Modbus or BACnet], BTU Calculator, Bluetooth®)

82 = QSI Version 2 (Scaled Pulse, BTU Calculator, Bluetooth®)

83 = QSI Version 3 (Scaled Pulse, 4-20 mA, Bluetooth®)

Retrofit Computer Kit (Display Only)

R9 = Q9 2-Button Computer Retrofit Kit (Replaces Q9 Display)

No Electronics - Turbine Only

XX = No Electronics - Turbine Only

6 CALIBRATION OF COMPUTER / DISPLAY:

GM = Gallons Per Minute (Gallons Default)

LM = Liters Per Minute (Litres Default)

GD = Gallons Per Minute (Gallons Default) with NIST Certificate

LD = Liters Per Minute (Litres Default) with NIST Certificate

XX = No Calibration

7 PACKAGING:

V = 05 Thru 10 Turbines, Turbine Only or w/Q9 Electronics
 05 Thru 20 Electronics Only (Q9 Replacement Kit or R9 Retrofit Kit)

W = 15 & 20 Turbines, Turbine Only or w/Q9 Electronics
 05 Thru 10 Turbines w/Q1 Electronics

X = 15 Thru 20 Turbine w/Q1 Electronics
 05 Thru 20 Turbines w/H9, P9, 42, PO Electronics
 05 Thru 20 Electronics Only (H9, P9 or 42 Electronics)

Y = 10 Turbines with ANSI Flange Turbine Only or w/Q9, Q1, H9, P9, 42, PO Electronics

Z = 15 & 20 Turbines with ANSI Flange Turbine Only or w/Q9, Q1, H9, P9, 42, PO Electronics

10 Turbines with ANSI Flange w/81, 82, & 83 Electronics

F = 05 Thru 20 Turbines w/81, 82, & 83 Electronics

G = 15 & 20 Turbines with ANSI Flange w/81, 82, & 83 Electronics



1 2 3 4 5 6 7
 ---->>>> G2 S 15 N Q9 GM W

SPECIFICATIONS

Fitting Type:	NPT or ISO (Female) BSPT (ISO 7 designation is RC)				
	150# ANSI (S10, S15 & S20 only)				
	Tri-Clamp (Stainless Steel only) - Fitting size is one size bigger than meter size				
Meter Sizes Available:	1/2"	3/4"	1"	1-1/2"	2"
Corresponding Tri-Clamp Fitting:	3/4"	1"	1-1/2"	2"	2-1/2"
Housing Material:	316 Stainless Steel, Aluminum, PVDF				
Flow Range:	1/2" (05)	1 - 10 GPM	(3.8 - 38 L/min)		
	1/2" (05) PVDF only	1.2 - 12 GPM	(4.5 - 45 L/min)		
	3/4" (07)	2 - 20 GPM	(7.6 - 76 L/min)		
	1" (10)	5 - 50 GPM	(19 - 190 L/min)		
	1-1/2" (15)	10 - 100 GPM	(38 - 380 L/min)		
	2" (20)	20 - 200 GPM	(76 - 760 L/min)		
Accuracy (% of Reading):	Turbine Only		Turbine w/Computer		
	1/2" (05)	± 2.0%	± 1.5%		
	3/4" (07)	± 1.5%	± 1.0%		
	1" (10)	± 1.5%	± 1.0%		
	1-1/2" (15)	± 1.0%	± 0.75%		
	2" (20)	± 1.0%	± 0.75%		
Repeatability:	± 0.1% (PVDF is ± 0.3%)				
Pressure Rating:					
Stainless Steel 316 SS	1,500 psi (102 bar)				
Aluminum	300 psi (21 bar)				
High Pressure 316 SS	3000 psi (207 bar)				
ANSI Flange 316 SS	Flange Rule				
Sanitary Flange 316 SS	Limited by fitting, clamp size, & temperature				
PVDF	100 psi (6.9 bar)				

Operating Temperature Range:	-40° F to 250° F (-40° C to 121° C)	
	(PVDF) -20° F to 180° F (-28° C to 82° C)	
with Display:	0° F to 140° F (-18° C to 60° C)	
with Hi-Temp. Riser (H9):	0° F to 185° F (-18° C to 85° C) See Temp. Chart in Q9 Non-Agency Manual	
Typical K-Factor:	1/2" (05)	2,500 PPG (660 Pulses/L)
	3/4" (07)	1,100 PPG (291 Pulses/L)
	1" (10)	565 PPG (149 Pulses/L)
	1-1/2" (15)	215 PPG (57 Pulses/L)
	2" (20)	100 PPG (26 Pulses/L)
Wetted Materials:	Housing:	316 Stainless Steel or Aluminum
	Bearings:	96% Alumina Oxide Ceramic
	Shaft:	Tungsten Carbide
	Rotor:	PVDF
	Rings:	316 Stainless Steel
Wetted Materials PVDF:	Housing:	PVDF (15% Carbon Fiber Filled)
	Bearings & Shaft:	98% Alumina Ceramic
	Rotor:	PVDF
	Rings:	Fluorocarbon (Optional PTFE)
Frequency Range:	1/2" (05)	42-420 Hz @ 1-10 GPM (3.8-38 L/min) / 45-450 Hz @ 1.2-12 GPM (4.5-45 L/min) (PVDF)
	3/4" (07)	37-370 Hz @ 2-20 GPM (7.6-76 L/min)
	1" (10)	47-470 Hz @ 5-50 GPM (19-190 L/min) / 45-475 Hz @ 5-50 GPM (19-190 L/min) (PVDF)
	1-1/2" (15)	36-360 Hz @ 10-100 GPM (38-380 L/min)
	2" (20)	33-330 Hz @ 20-200 GPM (76-760 L/min)
Calibration Report:	Comes standard with G2 Series meters. N.I.S.T. - Certification available.	

DIMENSIONS

NOTE: Q9 Display adds 0.72 in. (18 mm) to height
Stainless Steel (SS) and SS High Pressure Models

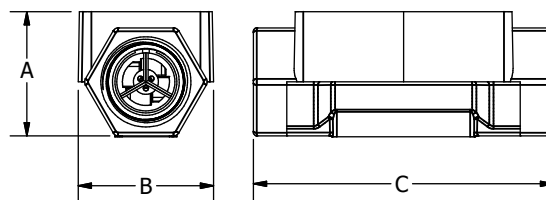
	S05 & H05 ½ in.	S07 & H07 ¾ in.	S10 & H10 1 in.	S15 & H15 1½ in.	S20 & H20 2 in.
A = Height	1.4 in. (35.6 mm)	1.6 in. (40.6 mm)	1.9 in. (48.3 mm)	2.6 in. (66.0 mm)	3.1 in. (78.7 mm)
B = Width	2.0 in. (50.8 mm)	2.0 in. (50.8 mm)	2.0 in. (50.8 mm)	2.7 in. (68.6 mm)	3.4 in. (86.4 mm)
C = Length	4.2 in. (106.7 mm)	4.3 in. (109.2 mm)	4.5 in. (114.3 mm)	5.3 in. (134.6 mm)	6.3 in. (160.0 mm)

Aluminum Models

	A05, ½ in.	A07, ¾ in.	A10, 1 in.	A15, 1½ in.	A20, 2 in.
A = Height	1.8 in. (45.7 mm)	2.0 in. (50.8 mm)	2.2 in. (55.9 mm)	2.8 in. (71.1 mm)	3.2 in. (81.3 mm)
B = Width	2.0 in. (50.8 mm)	2.0 in. (50.8 mm)	2.0 in. (50.8 mm)	2.7 in. (68.6 mm)	3.3 in. (83.8 mm)
C = Length	4.2 in. (106.7 mm)	4.3 in. (109.2 mm)	4.5 in. (114.3 mm)	5.3 in. (134.6 mm)	6.3 in. (160.0 mm)

PVDF Models

	P05, ½ in.	P10, 1 in.
A = Height	3.2 in. (81.3 mm)	3.3 in. (83.8 mm)
B = Width	2.1 in. (53.3 mm)	2.8 in. (71.1 mm)
C = Length	7.3 in. (185.4 mm)	8.1 in. (205.7 mm)



ACCESSORIES

Part No.	Description	Part No.	Description
113435-10	Conditioned Signal Module	113275-10	FM Approved* Remote Kit
125060-10	Pulse Out, External Power, Scaled Pulse Module	125206-2	1/2 in. Teflon O-Ring for PVDF Meter (2)
125100-10	4-20 mA Module	125206-1	1 in. Teflon O-Ring for PVDF Meter (2)
125260-02	90° Display Adaptor Kit	125527-01	Q9 Hi-Temp Riser Kit

*Does not make Non-FM Approved meters FM Approved

APPROVALS

CE NEMA 4 IP65

NOTE: For representation purpose only. Actual product models vary in shape, design, etc.

ANSI Flange and Sanitary Flange dimensions not shown. For those dimensions, please refer to product manuals or our website FLOMECmeters.com.

Wichita · Sydney

GREAT PLAINS INDUSTRIES



Service & Warranty: For technical assistance, warranty replacement or repair contact your **FLOMEC®** or **GPI®** distributor. In North or South America: **888-996-3837 / FLOMECmeters.com**
Outside North or South America: **+61 2 9540 4433 / FLOMECmeters.com**



SPECIFICATIONS

Standard Factory Configuration:	2 Totals (1 Resettable, 1 Cumulative); Factory Calibration in gallons or litres; User Calibration and Rate of Flow Indication
Display Electronics:	Q9 Electronics can be used on G2, TM, A1, and QSE Series Meters
Totalizing Registers:	Cumulative and Batch
K-Factor Limits:	Min: 0.001 pulses/unit; Max: 999,999 pulses/unit
Field Calibration:	Field calibrate by user methods: <ul style="list-style-type: none"> • K-factor entry • Correction Factor (% Adjust) • Dispense Display
Readout Totals:	LCD with floating decimal: Minimum Display = 0.001 units; Maximum Display = 999,999 x 100 units (6 digits)
Input Pulse Rate:	Frequency Range is 0.25 Hz - 3 kHz
Turbine Display:	
Internal Power Supply:	2 Alkaline AAA batteries at 1.5 volts each
Alkaline Battery Life:	Typically 2 Years
Temperatures:	
Operating Temperature (FM/ATEX Approved Meters):	0° F to +129° F (-18° C to +54° C)
Operating Temperature (Non-Approved Meters):	0° F to +140° F (-18° C to +60° C)
Storage Temperature:	-40° F to +158° F (-40° C to +70° C)

APPROVALS**

Select A1 & G2 models*



Q9 DISPLAY

The Q9 is the latest version of the popular FLOMEC computer display. It incorporates many of the most requested features over the years including low battery indication and the ability to display custom units with a name label. Optional plug-in daughterboards for 4-20mA, scaled pulse, and external power supply are easily added as original equipment or as a retrofit in the field. All of the daughterboard parameters are addressable through the two buttons on the Q9 display. An additional new feature is the ability to display velocity as well as rate and totals. Packaged in the same form as the familiar FLOMEC display, the Q9 operates on two AAA batteries with approximately 2 years of operation and maintains all of the same intrinsically safe approvals of past products.

FEATURES / BENEFITS

- Highly Visible LCD characters against a yellow-tinted background
- Many Field Configurable options for ease of operation including diagnostic mode and custom unit name
- Easily retrofit to most existing FLOMEC turbines
- Maximum versatility with optional pre-configured plug-in daughterboards to supply 4-20mA and Scaled Pulse
- Convenient Battery Power Level indication with automatic low battery warning
- Safety first design with FM Class 1, Div 1; ATEX; IECEx; cFM; CE approvals on select A1 and G2 models
- Providing operator consistency for all of your meters, the Q9 can be used with G2, TM, A1, and QSE Series Meters
- Ultimate ease of operation with permanent pre-programmed 5 point factory calibration
- Accommodates a wide range of technical expertise with 3 Field calibration methods (K-Factor, Correction Factor or Dispense Display)
- For simple Plug and Play installation, the Q9 is factory calibrated set to display Cumulative Total, Re-Settable Batch Total and Rate

USER CONFIGURATION

- PIN Protected, four-digit user selectable
- 11 pre-programmed engineering units and one user-configurable custom unit
- Alphanumeric information line for on-screen instructions and custom unit name
- Four pre-programmed, user-selectable time bases (Day, Hour, Min., Sec.)
- Configurable screen update frequency
- A user-selectable low-frequency filter
- Field Calibration is retained when switched to Factory Cal so you can have two accessible calibrations available
- Three field calibration methods available (1 point Dispense Display, 5 point Correction Factor, 5 point K-Factor)
- Diagnostic mode shows % battery life remaining

*See A1 & G2 Data Sheets for models that qualify for approvals.

**All Q9 Displays have the CE approval.

OTHER ELECTRONICS OPTIONS[†]

P9 = Pulse Output Module installed between the local display and the meter body

- Provides a Scaled NPN Open Collector Pulse
- Can provide External Power to the local display
- Comes with 10 ft. of installed cable

42 = 4-20 mA Module installed between the local display and the meter body

- Provides a 4–20 mA signal
- Provides a Scaled NPN Open Collector Pulse
- Can provide External Power to the local display
- Comes with 10 feet of installed cable

PO = Pulse Output Module installed in place of the display (blind meter)

- Provides an Unscaled NPN Open Collector Pulse

R9 = Replacement Q9 Computer Display for a meter body that has an old 09 display¹

- Comes with the extra parts required to retrofit a Q9 display in place of an 09 display

[†]Separate data sheets available.

¹FM/ATEX Approved when replacing a FM/ATEX Approved 09 display on a FM/ATEX Approved A1 or G2 meter.

DIMENSIONS

Length "A"	Height "B"	Height (Mounted) "C"	Width (Widest Point) "D"
3.40 in. (8.6 cm)	0.85 in. (2.1 cm)	0.72 in. (1.8 cm)	2.14 in. (5.4 cm)

